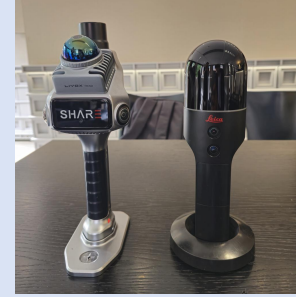


SHARE SLAM S20

Leica BLK 2 GO

Note

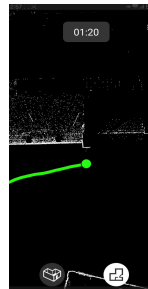
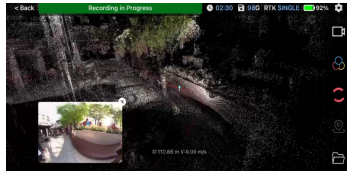
Appearance



Parameter Comparison

<b>Weight</b>	Main unit weight: 700g Total weight: 1079g	650g (including the battery: 775g)	The base unit and spare batteries must be carried, but Leica does not provide a shipping case; users must customize their own protective system.
<b>Device Dimensions</b>	Main unit dimensions: 110.5 × 114 × 143.1 mm Overall dimensions: 110.5 × 140 × 313.3 mm	Height: 279 mm Diameter: 80 mm	
<b>Protection Class</b>	IP5X	IP54	
<b>Working Temperature</b>	-20°C ~ 50°C	0°C-40°C	The BLK 2 Go generates significant heat on its own.
<b>Working Time per Battery</b>	150min	45min	
<b>Camera Parameter</b>	V-SLAM Camera: 1.0 MP Side Cameras: 16.0 MP × 2	12 MP × 1 + 4.8 MP × 3	
<b>FOV of the camera</b>	Vertical 200°, horizontal 140°	High-resolution lens: V: 120°, H: 90°; Panoramic lens: V: 135°, H: 300°	
<b>Shutter</b>	Mechanical shutter/Electronic shutter	Electronic shutter	
<b>GCP</b>	Equipped with base plate to collect control points with convenience and accuracy.	Not able to collecting control points.	
<b>RTK</b>	Integrated RTK module, 7 satellites and 24 frequencies	No RTK function	
<b>Scanning Range</b>	0.1m-40m @ 10% reflectivity; 0.1m-70m @ 80% reflectivity	0.5 m - 25 m	
<b>Point Cloud Accuracy</b>	Post-processing point cloud accuracy: Relative accuracy 1 cm Absolute accuracy 5 cm	Relative accuracy 1 cm	
<b>Point Cloud Number</b>	200,000 points/s	420,000 points/s	
<b>Storage</b>	Standard with a 256GB storage (expandable up to 1TB)	The device features 1TB of built-in storage and does not support storage module replacement.	With nearly identical scan times, the S20 produced 2.82GB of raw data, while BLK 2 Go generated only 1.16GB—a significantly smaller data volume.
<b>Connection Speed</b>	Connection speed is relatively fast, completing within ten seconds.	Slower, taking about 30 seconds to complete the connection (WiFi connection)	
<b>Initialization</b>	It comes with a built-in GCP base plate; simply place it flat to initialize.	Cannot be placed arbitrarily; must be properly stored in the storage box after use. Both the start and end of the project must be placed steadily on the base plate (the position of the base plate must not be altered), imposing significant restrictions.	
<b>Prolonged Operation</b>	Supports extended scanning sessions for individual projects, with scans lasting half an hour or longer.	The equipment overheats severely and cannot operate for extended periods.	BLK 2 Go experienced an overheating shutdown after scanning a 7-minute project before starting a new one (ambient temperature was only around 28°C).
<b>Data Transmission</b>	Supports wired transmission and provides a card reader for direct file copying to a computer.	Offers wired transmission and wireless WiFi transmission	To use wired transmission with BLK 2 Go, you must power off the device and remove the battery, which is cumbersome. Additionally, wireless transmission is relatively slow, at around 10 Mb/s.

Mobile Software



The Leica-equipped mobile software does not support real-time viewing of color point clouds, nor does it display device details such as battery level and storage capacity.

Using Experience

PC Software

Free to use, fast data processing (5.5 minutes of data processing takes about half an hour)

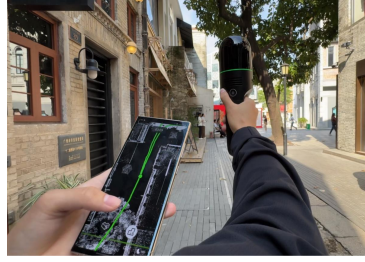
The software is device-bound; free use requires purchasing the hardware. Data processing is slow (7 minutes of processing time per hour). However, the software offers comprehensive functionality, including creating MESH models, importing other models for comparison with point clouds during construction acceptance, performing point cloud registration, and exporting most point cloud formats such as LAS, PTS, PTX, E57, RCP, and PLY (PCD format cannot be exported).

Scanning Experience

Equipped with a phone holder, enabling one-handed operation or extended use.



Without a phone holder, you must operate the device with one hand while viewing the point cloud with the other.

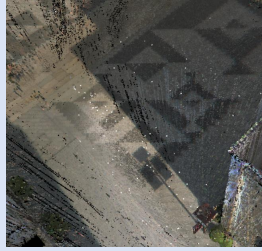


Ground Coloring

S20:



BLK 2 Go:



BLK 2 Go color rendering is inaccurate



Facade

S20:



BLK 2 Go:



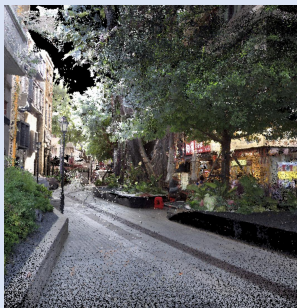
BLK 2 Go is largely incapable of reproducing architectural facade details (right: promotional image from official website)



Point Cloud Comparison

Pedestrian

S20:



BLK 2 Go:



The S20 performs dynamic object filtering on pedestrians, while BLK 2 Go barely applies noise reduction, leaving numerous striped noise artifacts and resulting in poor point cloud quality (see actual scene photo below).



Text

S20:



BLK 2 Go:

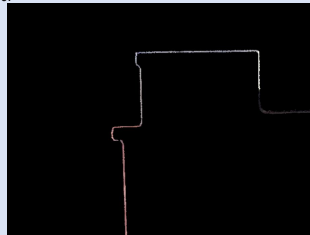


BLK 2 Go exhibits an overall grayish-green color cast with low color accuracy (see photo below for real-world scene).

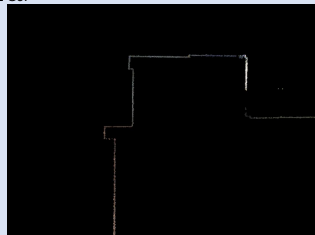


Right angle

S20:



BLK 2 Go:



Leica BLK 2 Go handles right angles better.

